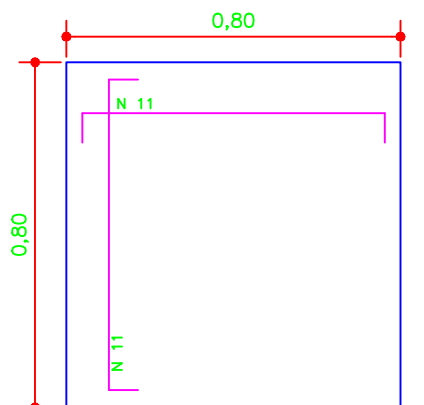


[illegible]

Figure 1: Section of a reinforced concrete column. The diagram shows a cross-section of a column with a blue outline. The total height is 2.10m, divided into segments of 0.20m, 0.40m, 0.80m, and 0.60m. Reinforcement bars are shown in red and green. The bottom segment (0.60m) contains 4 bars (S1, S2, S3, S4). The top segment (0.20m) contains 2 bars. The middle segments (0.40m and 0.80m) contain 2 bars each. A green line indicates the N2-6 axis at 0.30m from the bottom.

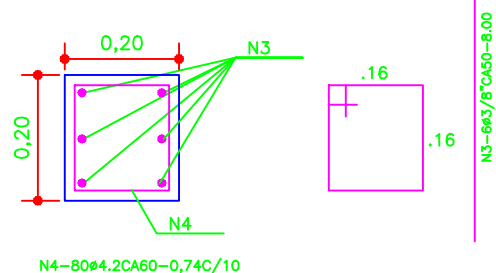


A diagram of a step function $f(x)$ on the interval $[0, 1]$. The function is defined as follows:

- $f(x) = 0.10$ for $x \in [0, 0.25]$
- $f(x) = 0.75$ for $x \in (0.25, 0.75)$
- $f(x) = 0.10$ for $x \in [0.75, 1]$

The diagram shows a horizontal line at $y = 0.10$ from $x = 0$ to $x = 0.25$, a horizontal line at $y = 0.75$ from $x = 0.25$ to $x = 0.75$, and a horizontal line at $y = 0.10$ from $x = 0.75$ to $x = 1$. The function is zero elsewhere.

BASE (S1,S2,S3,S4)



PILAR(P1,P2,P3,P4)

SISTEMA DE ABASTECIMENTO DE AGUA	
PROJETO:	DETALHE DA TORRE DE SUSTENTAÇÃO DO RESERVATÓRIO
TITULO:	DETALHES DAS FERRAGENS DA TORRE DA SUSTENTAÇÃO
PREFEITURA MUNICIPAL DE PENALVA—MA	DATA: